

N.E. 1/4  
SECTION 18, T.7N., R.1E., S.L.B. & M.

IN WEBER COUNTY  
SCALE 1" = 200'

TAXING UNIT: 36

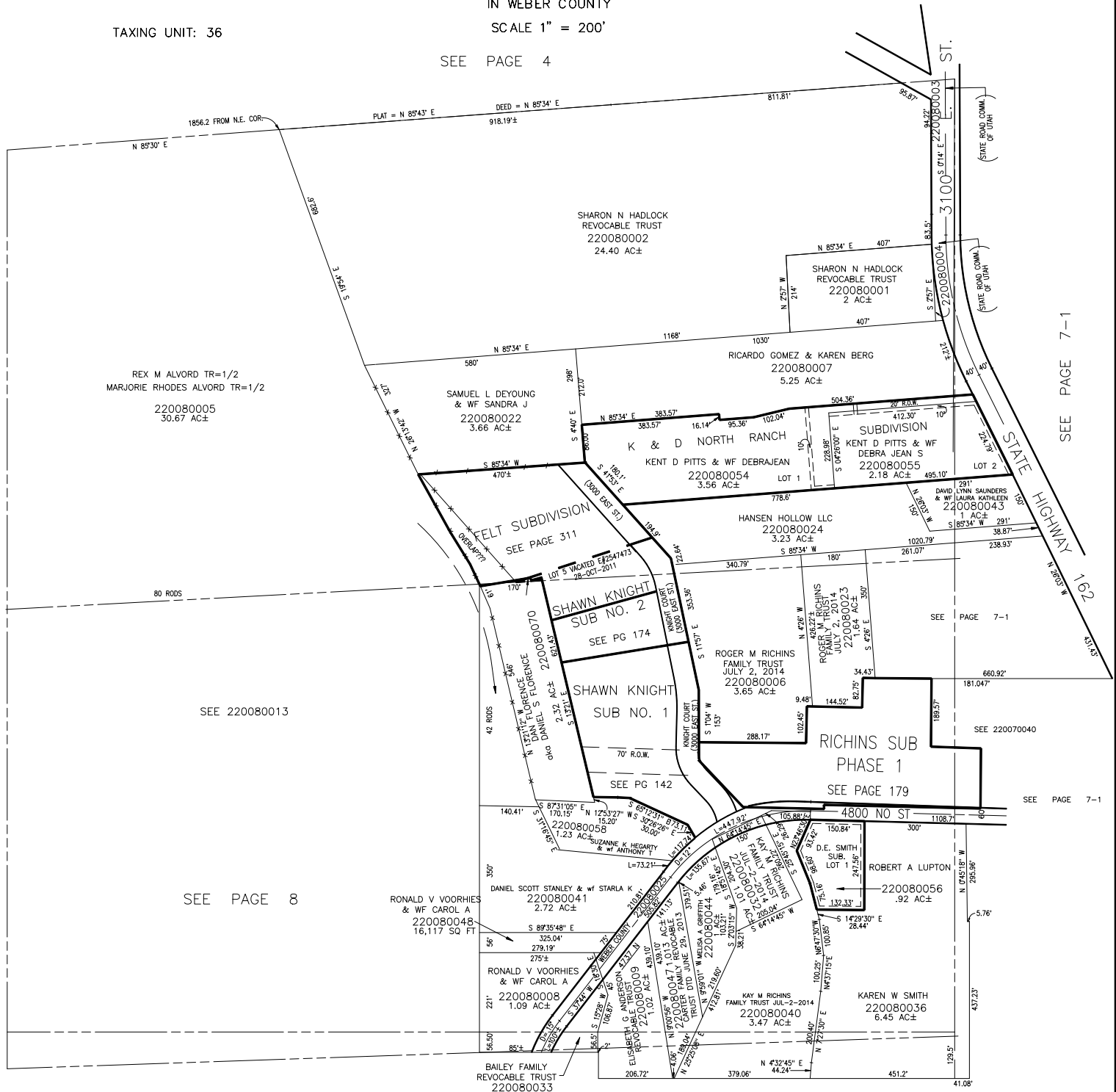
SEE PAGE 4

SEE PAGE 8

SEE PAGE 7-1

SEE PAGE 7-1

SEE PAGE 8-2



REX M ALVORD TR=1/2  
MARJORIE RHODES ALVORD TR=1/2  
220080005  
30.67 AC±

SHARON N HADLOCK  
REVOCABLE TRUST  
220080002  
24.40 AC±

SHARON N HADLOCK  
REVOCABLE TRUST  
220080001  
2 AC±

RICARDO GOMEZ & KAREN BERG  
220080007  
5.25 AC±

SAMUEL L DEYOUNG  
& WF SANDRA J  
220080022  
3.66 AC±

K & D NORTH RANCH  
KENT D PITTS & WF  
DEBRA JEAN S  
220080054  
3.56 AC±

HANSEN HOLLOW LLC  
220080024  
3.23 AC±

SHAWN KNIGHT  
SUB NO. 2  
SEE PG 174

SHAWN KNIGHT  
SUB NO. 1  
SEE PG 142

RICHINS SUB  
PHASE 1  
SEE PAGE 179

ROBERT A LUPTON  
220080056  
.92 AC±

DANIEL SCOTT STANLEY & WF STARLA K  
220080041  
2.72 AC±

RONALD V VOORHIES  
& WF CAROL A  
220080008  
1.09 AC±

KAY M RICHINS  
FAMILY TRUST JUL-2-2014  
220080040  
3.47 AC±

KAREN W SMITH  
220080036  
6.45 AC±

BAILEY FAMILY  
REVOCABLE TRUST  
220080033